

State of Wyoming Corner Record

(In compliance with the **CORNER PERPETUATION AND FILING ACT**, Wyoming Statutes, 1997 Section 33-29-140 et. seq., and the Rules and Regulations of the Board of Professional Engineers and Professional Land Surveyors)

Reverse side of this form may be used if more space is needed.

Record of original survey and citation of source of historical information (if corner is lost or obliterated). Description of corner monumentation evidence found and/or monument and accessories established to perpetuate the location of this corner. Sketch of relative location of monument, accessories, and reference points with course and distance to adjacent corner(s) (if determined in this survey). Method and rationale for reestablishment of lost or obliterated corner.

LOCATION: Southwest Corner, S.36, T.16N., R.62W., 6th P.M., Laramie County, Wyoming.

ORIGINAL RECORD: Set a white sandstone 20x8x4 for sec corner 1,2,35,36.

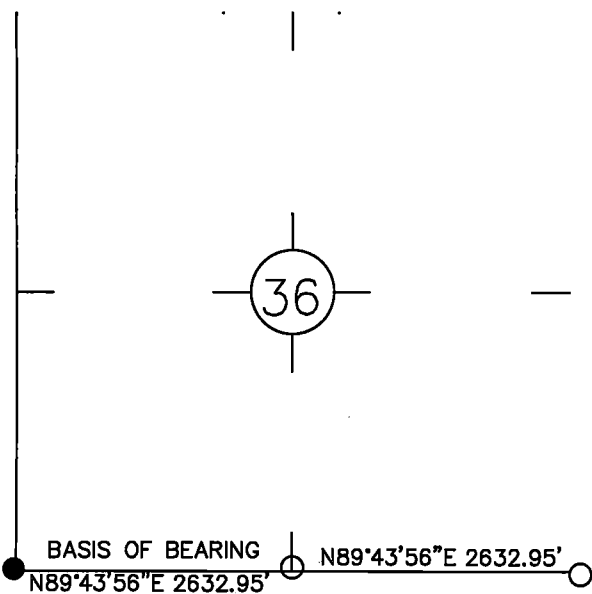
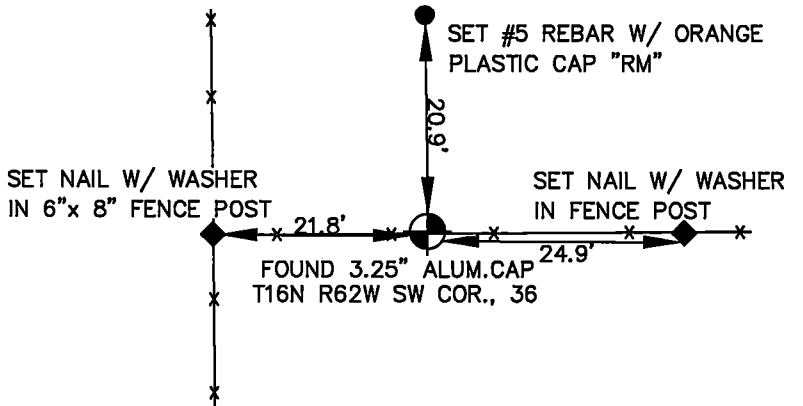
FOUND: 3.25" Aluminum cap stamped "PLS 5910, NO DATE" on a 2" alum. post 1.5' above ground in open pasture land, on E-W fence line.

MONUMENT AND ACCESSORIES ESTABLISHED: Set #5 rebar w/ orange plastic caps stamped "RM" and nail w/ 1.5" washer in fence posts.



BEARINGS AND DISTANCES SHOWN HEREON ARE GRID AND BASED ON THE WYOMING STATE PLANE COORDINATE SYSTEM, NAD84/2011 BETWEEN THE MONUMENTS AS LABELED HEREON

GRID DISTANCES ARE SHOWN, AS GPS MEASURED IN THE FIELD. TO GET GROUND DISTANCES MULTIPLY THE SHOWN DISTANCE BY 1.000249429.



MONUMENT

Date of Field Work: 5/02/2017

Office Reference: APC.0001

Project Point No.: 4

Cross Index Plat

1	2	3	4	5	6	7	8	9	10	11	12	13	14	15	16	17	18	19	20	21	22	23	24	25
+	+	+	+	+	+	+	+	+	+	+	+	+	+	+	+	+	+	+	+	+	+	+	+	+
+	6	+	5	+	4	+	3	+	2	+	1	+	+	+	+	+	+	+	+	+	+	+	+	+
+	+	+	+	+	+	+	+	+	+	+	+	+	+	+	+	+	+	+	+	+	+	+	+	+
+	7	+	8	+	9	+	10	+	11	+	12	+	+	+	+	+	+	+	+	+	+	+	+	+
+	+	+	+	+	+	+	+	+	+	+	+	+	+	+	+	+	+	+	+	+	+	+	+	+
+	18	+	17	+	16	+	15	+	14	+	13	+	+	+	+	+	+	+	+	+	+	+	+	+
+	+	+	+	+	+	+	+	+	+	+	+	+	+	+	+	+	+	+	+	+	+	+	+	+
+	19	+	20	+	21	+	22	+	23	+	24	+	+	+	+	+	+	+	+	+	+	+	+	+
+	+	+	+	+	+	+	+	+	+	+	+	+	+	+	+	+	+	+	+	+	+	+	+	+
+	30	+	29	+	28	+	27	+	26	+	25	+	+	+	+	+	+	+	+	+	+	+	+	+
+	+	+	+	+	+	+	+	+	+	+	+	+	+	+	+	+	+	+	+	+	+	+	+	+
+	31	+	32	+	33	+	34	+	35	+	36	+	+	+	+	+	+	+	+	+	+	+	+	+
+	+	+	+	+	+	+	+	+	+	+	+	+	+	+	+	+	+	+	+	+	+	+	+	+
1	2	3	4	5	6	7	8	9	10	11	12	13	14	15	16	17	18	19	20	21	22	23	24	25

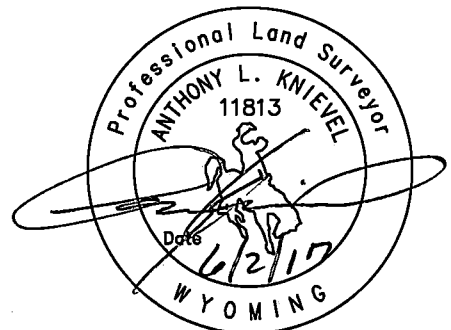
Firm/Agency, Address

Ascent Geomatics
7535 Hilltop Circle
Denver, Co. 80221

Telephone Number: 303-928-7128

This corner record was prepared by me or under my direction and supervision.

SEAL & SIGNATURE



RECP #: 710374
 RECORDED 6/26/2017 AT 2:29 PM BK# 2548 PG# 865
 Debra K. Lee, CLERK OF LARAMIE COUNTY, WY PAGE 1 OF 1

Corner Name: South 1/4 Corner, Section 36 T 16 N, R 62 W, 6th P.M.

Cross-Index No.: 7-21

County: Laramie Wyoming

SBRPEPLS/PLSW: March 1994; PLSW January 1998